

Good to Great Fund Raising Drive

Donation Options

One-time Pledge of \$ _____

___ Year Pledge of \$ _____
(maximum of 5 years)

Amount Enclosed (please check one)

\$1,000..... _____

\$750 _____

\$500 _____

\$250 _____

\$100 _____

\$50 _____

\$25..... _____

Other..... _____

Optional Special Interests (Please enter the amount you wish to contribute from your donation towards any of the current special interest projects.)

White Water Rapids Project..... _____

Skate Board Park _____

Post Secondary Building..... _____

Automatic payment options are available.

\$25.00 Membership (single) _____

\$50.00 Membership (family)..... _____

Recognition will be given to donors \$1,000 and above. For naming opportunities, please contact any committee member.

Name: _____

E-mail: _____

Address: _____

Checks payable to
GDCCF - Good to Great

c/o Jack Klaus

Manchester Chamber of Commerce

200 East Main Street

Manchester, IA 52057-1733

563-927-4141

The Greater Delaware County Community Foundation is recognized by the Internal Revenue Service as a 501c(3) organization. That assures all donors a charitable contribution when donations are accepted. The Foundation is listed in IRS Publication 78, Search for Exempt Organizations.

Good to Great Goal



This project was undertaken in collaboration with the following area groups, organizations, and entities.

- The City of Manchester
- West Delaware County Community School District
- Delaware County Economic Development
- Manchester Enterprises
- The Manchester Chamber of Commerce
- Regional Medical Center
- Delaware County Supervisors
- An abundance of enthusiastic volunteers

Printing of this brochure courtesy of F&M Bank.

Contact Us

E-mail

goodtogreat@manchester247.com

Telephone

563-927-4141

Committee Chairs

CHAIRPERSON

Leo Monaghan

BRANDING

Toni Browning

BEAUTIFICATION

Mary Ann Poynor

Roger Lake

RIVER & RECREATION

Ryan Wicks

YOUTH ACTIVITIES

Deb Blong

POST-SECONDARY EDUCATION

Dean Sherman

Tim Vick

HIGHWAY 20 CORRIDOR

Mitch Peyton

FINANCE

Jeff Madlom

Dr. John Tyrrell

ENTREPRENEURSHIP

Dr. John Tyrrell

Larry Gritton, CPA

PUBLICITY

Lori Scovel

Toni Browning

Good to Great



Fund Raising Drive

Your Family
Your Community
Your Opportunity

Moving Manchester
from Good to Great



Manchester

IOWA

FAMILY. COMMUNITY. OPPORTUNITY.

The vision is clear. The dreams are real. Volunteer.

Moving From Good to Great



The community of Manchester has long had an outstanding reputation with its citizens and businesses.

This success came through hard work, determination, and focus. Manchester remains a good city to live and work. But is being good, enough?

With an eye on how to move Manchester from a “good community” to a “great community” underway, the citizens and leadership of Manchester have outlined eight themes that identify a great community.

- Job Creation (growth and expansion)
- Growing Population
- Community Beautification
- Community Marketing
- Tourism
- Cultivating Leadership
- Educational Commitment
- Enhanced Transportation

Eight committees were established to focus on each of these themes.

Today these committees are vibrant, active entities full of energetic, dedicated people committed to making Manchester a great place to live. The following committees need help. They need funds. They need support. They need you!

Branding

Focus: To develop a marketing plan for Manchester using available communication and promotional tools including a common brand/identity, design and promotion of a ONE Stop, centralized community website.

So Far: Developed a brand for Manchester that includes the new symbol, color combination, and slogan “Family. Community. Opportunity.” Launched a ONE Stop website promoting Manchester.

Next Up: Promoting Manchester through brand identification and use of the ONE Stop community website.

Beautification

Focus: To improve the physical appearance of Manchester with the goal of being one of the most visually attractive communities in Iowa.

So Far: New banners placed down town.

Next Up: Welcome signs.

River & Recreation

Focus: To provide recreational opportunities to area residents and to create Manchester and Delaware County as a destination for river enthusiasts by enhancing the River Trail experience from Backbone State Park to Bailey’s Ford Park by improving river access points and by building a whitewater park on the Maquoketa River as it flows through Manchester.

So Far: Cleanup Day along the banks of the Maquoketa River, and development of a concept map for a White Water Park along the Maquoketa River.

Next Up: Continue with the development of the White Water Park along the Maquoketa River.

Youth

Focus: To satisfy the needs of a growing population with accompanying school enrollment growth.

So Far: Community Service, volunteerism

and fundraising projects including: Rhubarb Festival, Local Can Drive and RAGBRAI. Introduction of Youth Clubs including Fishing, Gardening, Archery, Shooting and Knitting.

Next Up: Bike Safety Rodeo and Future BMX/Skateboard Park Site on South Brewer Street.

Post Secondary Education

Focus: To enhance the community through the development of post-secondary education.

So Far: Established ties with NICC and UIU to provide full-time staff members in Manchester.

Next Up: Establishing a temporary location to house a classroom and computer lab with permanent housing as a goal.

Entrepreneurship

Focus: To cultivate leadership and involvement throughout all generations in the community; support

a growing entrepreneurial community and continue to identify new entrepreneurs that will energize the local economy.

So Far: Developed class in Manchester and actively involved with numerous small business ventures.

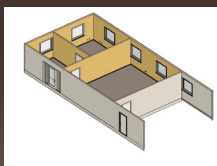
Next Up: Continue working with small business, the school district, and potential entrepreneurs providing support, guidance, and educational opportunities.

Highway 20 Corridor

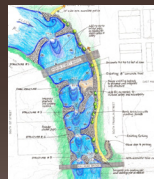
Focus: To develop a more diverse business and industry base, help existing business expansions, recruit/attract new business, and increase downtown retail growth.

So Far: Focused efforts for the development of 40 acres west of E-Z Pickens.

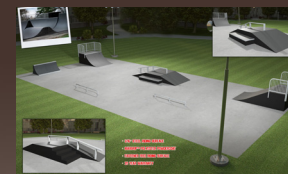
Next Up: Expansion of the development of the business and industrial base; continued efforts to increase downtown traffic as well as promoting retail business ventures.



An early rendering of the future post-secondary education classroom hosting NICC and Upper Iowa University in Manchester.



The River & Recreation project includes building a white water park, consisting of a series of engineered drops, on the Maquoketa River in Manchester. This white water park will provide recreational opportunities, will draw outdoor and paddling enthusiasts resulting in positive economic impact to the local economy, and will improve the river ecosystem.



A drawing of how the Skateboard Park Site might look. The park will include a concrete floor and metal ramps, rails, banks, launch boxes and grind boxes.